



Draft

**Impervious Cover Assessment
for
Stow Creek Township, Cumberland County, New Jersey**

*Prepared for Stow Creek Township by the
Rutgers Cooperative Extension Water Resources Program*

April 25, 2018

Table of Contents

Introduction	1
Stow Creek Township Impervious Cover Analysis	4
Elimination of Impervious Surfaces	12
Pervious Pavement	14
Impervious Cover Disconnection Practices	14
Examples of Opportunities in Stow Creek Township	17
Conclusions	17
References	18
Appendix A: Concept Plans and Detailed Green Infrastructure Information Sheets	

Introduction

Pervious and impervious are terms that are used to describe the ability or inability of water to flow through a surface. When rainfall hits a surface, it can soak into the surface or flow off the surface. Pervious surfaces are those which allow stormwater to readily soak into the soil and recharge groundwater. When rainfall drains from a surface, it is called "stormwater" runoff (Figure 1). An impervious surface can be any material that has been placed over soil that prevents water from soaking into the ground. Impervious surfaces include paved roadways, parking lots, sidewalks, and rooftops. As impervious areas increase, so does the volume of stormwater runoff.



Figure 1: Stormwater draining from a parking lot

New Jersey has many problems due to stormwater runoff, including:

- **Pollution**: According to the 2010 New Jersey Water Quality Assessment Report, 90% of the assessed waters in New Jersey are impaired, with urban-related stormwater runoff listed as the most probable source of impairment (USEPA, 2013). As stormwater flows over the ground, it picks up pollutants including animal waste, excess fertilizers, pesticides, and other toxic substances. These pollutants are then able to enter waterways.
- **Flooding**: Over the past decade, the state has seen an increase in flooding. Communities around the state have been affected by these floods. The amount of damage caused has also increased greatly with this trend, costing billions of dollars over this time span.

- Erosion: Increased stormwater runoff causes an increase in the velocity of flows in our waterways. The increased velocity after storm events erodes stream banks and shorelines, degrading water quality. This erosion can damage local roads and bridges and cause harm to wildlife.

The primary cause of the pollution, flooding, and erosion problems is the quantity of impervious surfaces draining directly to local waterways. New Jersey is one of the most developed states in the country. Currently, the state has the highest percent of impervious cover in the country at 12.1% of its total area (Nowak & Greenfield, 2012). Many of these impervious surfaces are directly connected to local waterways (i.e., every drop of rain that lands on these impervious surfaces ends up in a local river, lake, or bay without any chance of being treated or soaking into the ground). To repair our waterways, reduce flooding, and stop erosion, stormwater runoff from impervious surfaces has to be better managed. Surfaces need to be disconnected with green infrastructure to prevent stormwater runoff from flowing directly into New Jersey's waterways. Disconnection redirects runoff from paving and rooftops to pervious areas in the landscape.

Green infrastructure is an approach to stormwater management that is cost-effective, sustainable, and environmentally friendly. Green infrastructure projects capture, filter, absorb, and reuse stormwater to maintain or mimic natural systems and to treat runoff as a resource. As a general principal, green infrastructure practices use soil and vegetation to recycle stormwater runoff through infiltration and evapotranspiration. When used as components of a stormwater management system, green infrastructure practices such as bioretention, green roofs, porous pavement, rain gardens, and vegetated swales can produce a variety of environmental benefits. In addition to effectively retaining and infiltrating rainfall, these technologies can simultaneously help filter air pollutants, reduce energy demands, mitigate urban heat islands, and sequester carbon while also providing communities with aesthetic and natural resource benefits (USEPA, 2013).

The first step to reducing the impacts from impervious surfaces is to conduct an impervious cover assessment. This assessment can be completed on different scales: individual lot, municipality, or watershed. Impervious surfaces need to be identified for stormwater management. Once impervious surfaces have been identified, there are three steps to better manage these surfaces.

1. ***Eliminate surfaces that are not necessary.*** For example, a paved courtyard at a public school could be converted to a grassed area.
2. ***Reduce or convert impervious surfaces.*** There may be surfaces that are required to be hardened, such as roadways or parking lots, but could be made smaller and still be functional. A parking lot that has two-way car ways could be converted to one-way car ways. There also are permeable paving materials such as porous asphalt, pervious concrete, or permeable paving stones that could be substituted for impermeable paving materials (Figure 2).
3. ***Disconnect impervious surfaces from flowing directly to local waterways.*** There are many ways to capture, treat, and infiltrate stormwater runoff from impervious surfaces. Opportunities may exist to reuse this captured water.



Figure 2: Rapid infiltration of water through porous pavement is demonstrated at the USEPA Edison New Jersey test site

Stow Creek Township Impervious Cover Analysis

Stow Creek Township is located in Cumberland County, New Jersey and covers approximately 18.86 square miles north of Greenwich Township. Figures 3 and 4 illustrate that Stow Creek Township is dominated by agriculture land uses. A total of 6.7% of the municipality's land use is classified as urban. Of the urban land in Stow Creek Township, rural residential is the dominant land use (Figure 5).

The literature suggests a link between impervious cover and stream ecosystem impairment (Schueler, 1994; Arnold and Gibbons, 1996; May et al., 1997). Impervious cover may be linked to the quality of lakes, reservoirs, estuaries, and aquifers (Caraco et al., 1998), and the amount of impervious cover in a watershed can be used to project the current and future quality of streams. Based on the scientific literature, Caraco et al. (1998) classified urbanizing streams into the following three categories: sensitive streams, impacted streams, and non-supporting streams. Schueler (1994, 2004) developed an impervious cover model that classified "sensitive streams" as typically having a watershed impervious surface cover from 0-10%. "Impacted streams" have a watershed impervious cover ranging from 11-25% and typically show clear signs of degradation from urbanization. "Non-supporting streams" have a watershed impervious cover of greater than 25%; at this high level of impervious cover, streams are simply conduits for stormwater flow and no longer support a diverse stream community. Schueler et al. (2009) reformulated the impervious cover model based upon new research that had been conducted. This new analysis determined that stream degradation was first detected at 2 to 15% impervious cover. The updated impervious cover model recognizes the wide variability of stream degradation at impervious cover below 10%. The updated model also moves away from having a fixed line between stream quality classifications. For example, 5 to 10% impervious cover is included for the transition from sensitive to impacted, 20 to 25% impervious cover for the transition between impacted and non-supporting, and 60 to 70% impervious cover for the transition from non-supporting to urban drainage.

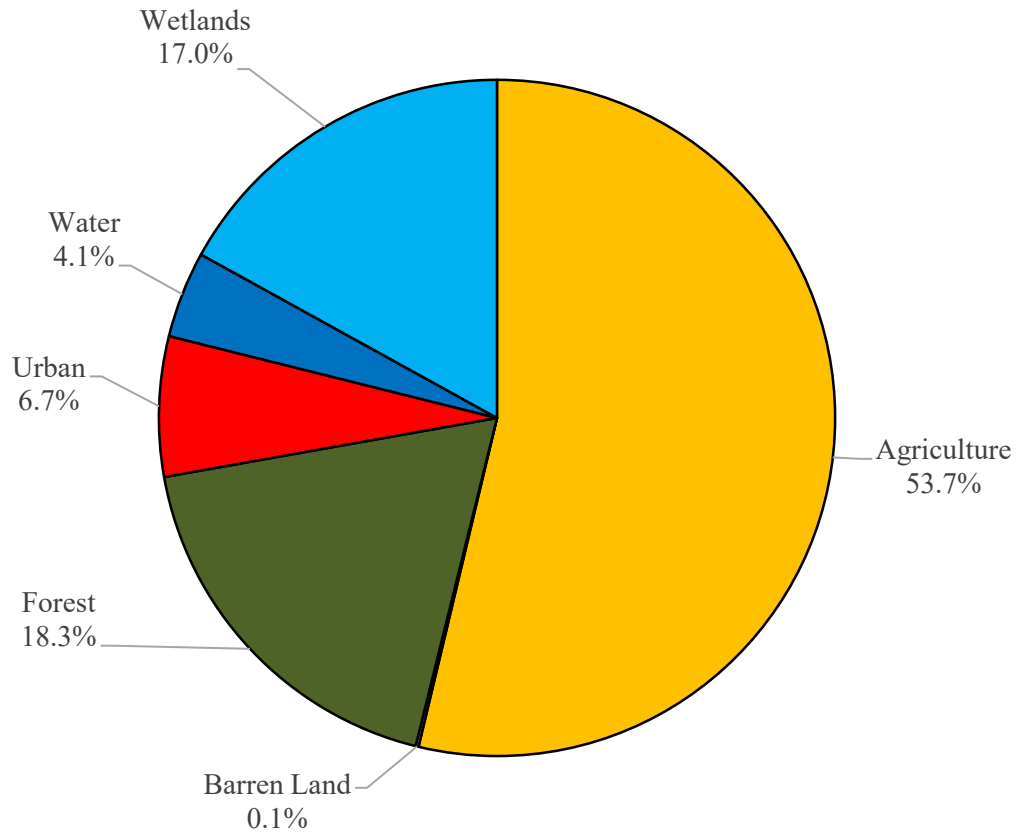


Figure 3: Pie chart illustrating the land use in Stow Creek Township

Land Use Types for Stow Creek Township

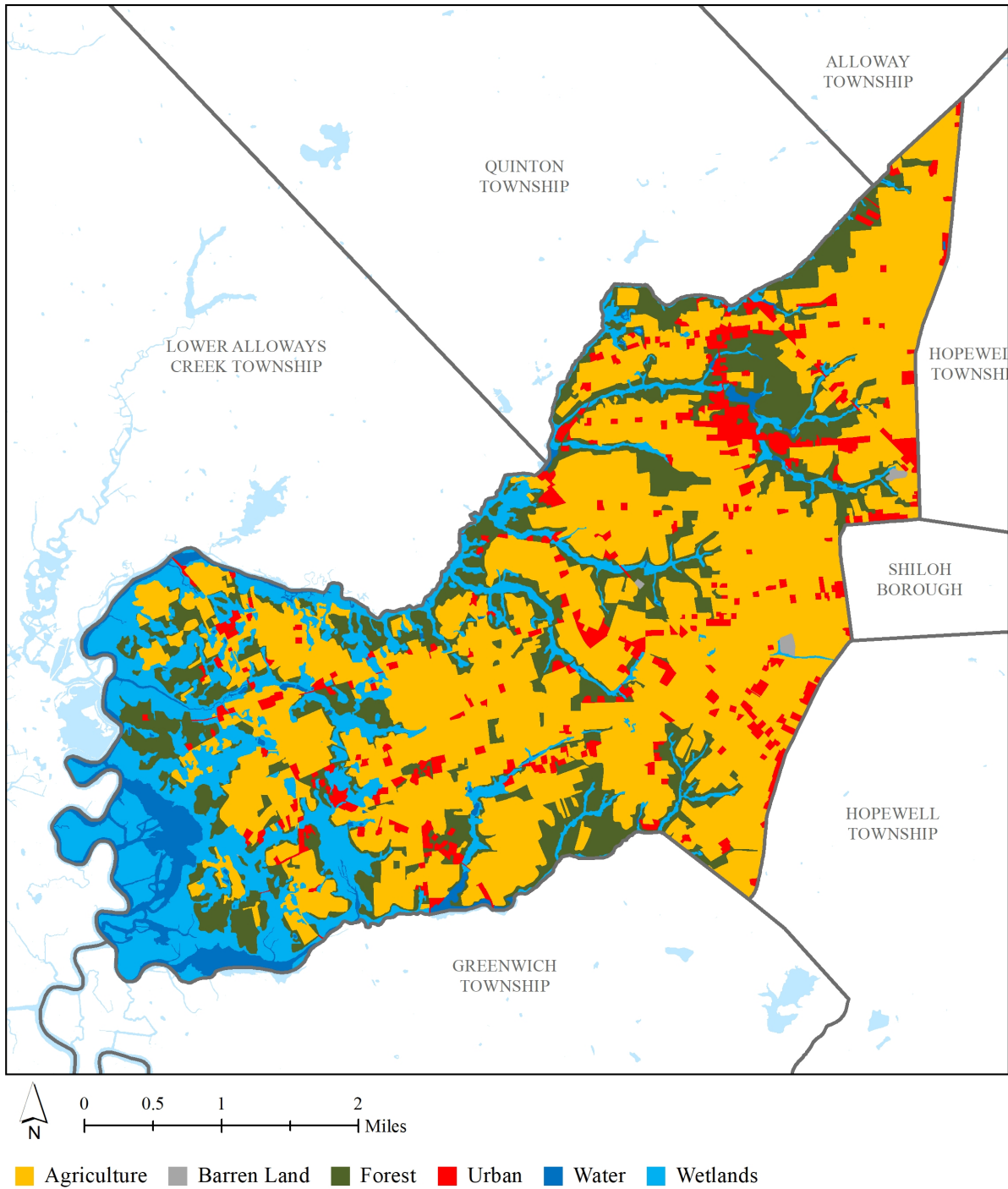


Figure 4: Map illustrating the land use in Stow Creek Township

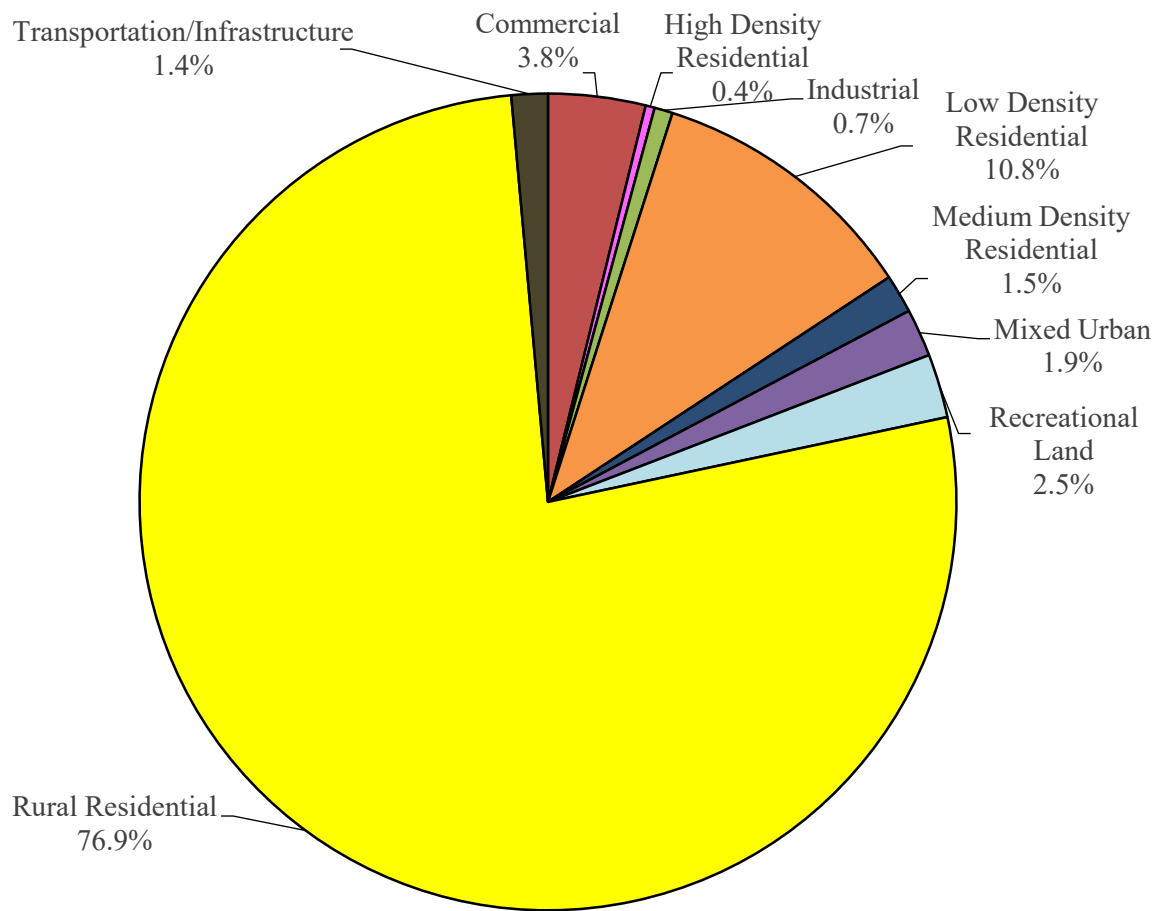


Figure 5: Pie chart illustrating the various types of urban land use in Stow Creek Township

The New Jersey Department of Environmental Protection's (NJDEP) 2012 land use/land cover geographical information system (GIS) data layer categorizes Stow Creek Township into many unique land use areas, assigning a percent impervious cover for each delineated area. These impervious cover values were used to estimate the impervious coverage for Stow Creek Township. Based upon the 2012 NJDEP land use/land cover data, approximately 1.6% of Stow Creek Township has impervious cover. This level of impervious cover suggests that the streams in Stow Creek Township are likely sensitive streams.

Water resources are typically managed on a watershed/subwatershed basis; therefore, an impervious cover analysis was performed for each subwatershed within Stow Creek Township (Table 1 and Figure 6). On a subwatershed basis, impervious cover ranges from 1.0% in the Pine Mount Creek subwatershed to 2.8% in the Cohansey River subwatershed. Evaluating impervious cover on a subwatershed basis allows the municipality to focus impervious cover reduction or disconnection efforts in the subwatersheds where frequent flooding occurs.

In developed landscapes, stormwater runoff from parking lots, driveways, sidewalks, and rooftops flows to drainage pipes that feed the sewer system. The cumulative effect of these impervious surfaces and thousands of connected downspouts reduces the amount of water that can infiltrate into soils and greatly increases the volume and rate of runoff that flows to waterways. Stormwater runoff volumes (specific to Stow Creek Township, Cumberland County) associated with impervious surfaces were calculated for the following storms: the New Jersey water quality design storm of 1.25 inches of rain, an annual rainfall of 44 inches, the 2-year design storm (3.3 inches of rain), the 10-year design storm (5.1 inches of rain), and the 100-year design storm (8.8 inches of rain). These runoff volumes are summarized in Table 2. A substantial amount of rainwater drains from impervious surfaces in Stow Creek Township. For example, if the stormwater runoff from one water quality storm (1.25 inches of rain) in the Stow Creek subwatershed was harvested and purified, it could supply water to 46 homes for one year¹.

¹ Assuming 300 gallons per day per home

Table 1: Impervious cover analysis by subwatershed for Stow Creek Township

Subwatershed	Total Area		Land Use Area		Water Area		Impervious Cover		
	(ac)	(mi ²)	(ac)	(mi ²)	(ac)	(mi ²)	(ac)	(mi ²)	(%)
Barrett Run	876.9	1.37	876.9	1.37	0.0	0.00	21.3	0.03	2.4%
Cohansey River	380.7	0.59	380.0	0.59	0.7	0.00	10.8	0.02	2.8%
Pine Mount Creek	43.3	0.07	43.3	0.07	0.0	0.00	0.4	0.00	1.0%
Stow Creek	10,772.5	16.83	10,273.8	16.05	498.7	0.78	147.3	0.23	1.4%
Total	12,073.3	18.86	11,574.0	18.08	499.4	0.78	179.8	0.28	1.6%

Subwatersheds of Stow Creek Township

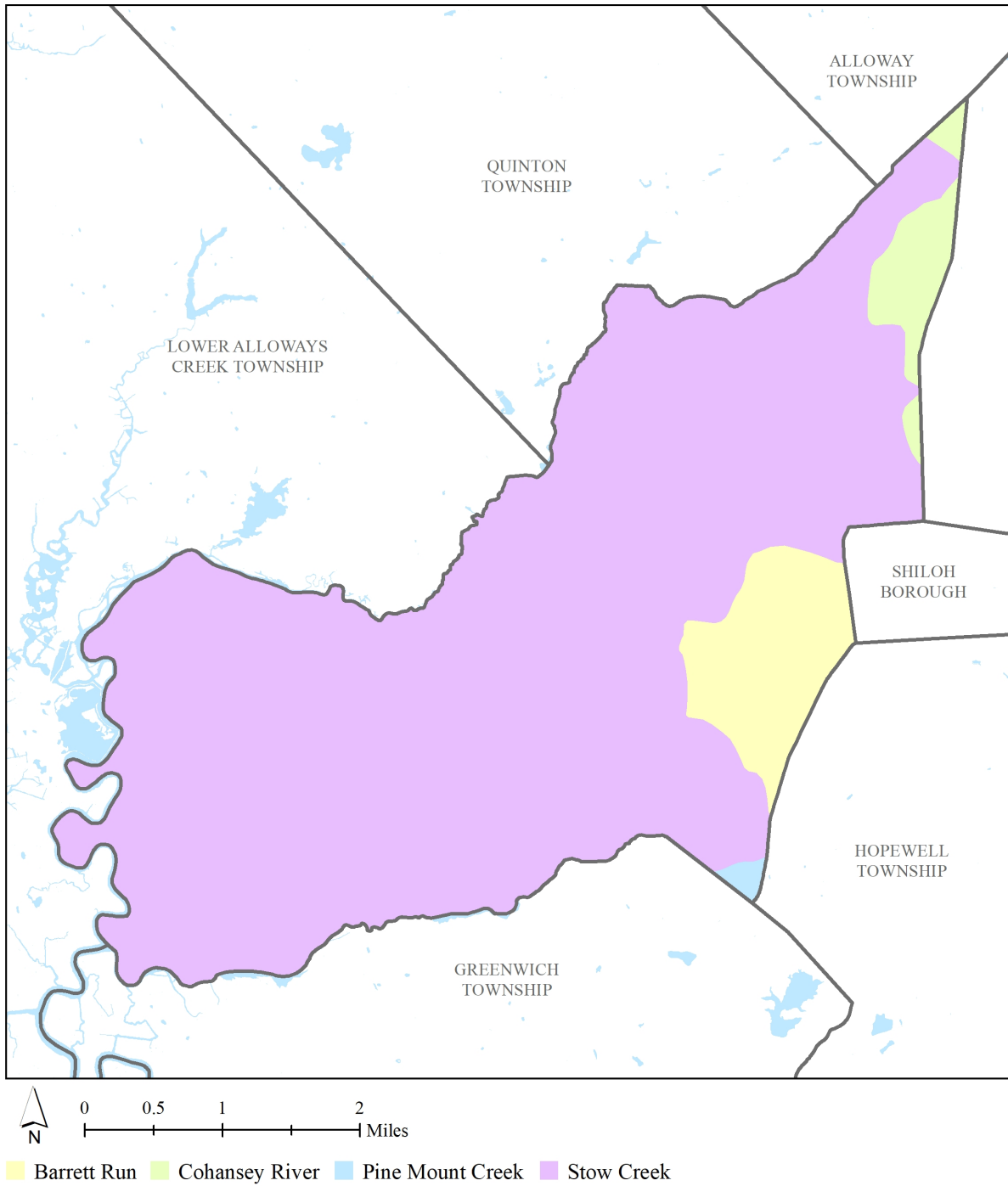


Figure 6: Map of the subwatersheds in Stow Creek Township

Table 2: Stormwater runoff volumes from impervious surfaces by subwatershed in Stow Creek Township

Subwatershed	Total Runoff Volume for the 1.25" NJ Water Quality Storm (Mgal)	Total Runoff Volume for the NJ Annual Rainfall of 44" (Mgal)	Total Runoff Volume for the 2-Year Design Storm (3.3") (Mgal)	Total Runoff Volume for the 10-Year Design Storm (5.1") (Mgal)	Total Runoff Volume for the 100-Year Design Storm (8.8") (Mgal)
Barrett Run	0.7	25.4	1.9	2.9	5.1
Cohansey River	0.4	12.9	1.0	1.5	2.6
Pine Mount Creek	0.0	0.5	0.0	0.1	0.1
Stow Creek	5.0	176.0	13.1	20.4	35.0
Total	6.1	214.8	16.0	24.9	42.8

The next step is to set a reduction goal for impervious area in each subwatershed. Based upon the Rutgers Cooperative Extension (RCE) Water Resources Program's experience, a 10% reduction would be a reasonably achievable reduction for these subwatersheds in Stow Creek Township. While it may be difficult to eliminate paved areas or replace paved areas with permeable pavement, it is relatively easy to identify impervious surfaces that can be disconnected using green infrastructure practices. For all practical purposes, disconnecting an impervious surface from a storm sewer system or a water body is an "impervious area reduction." The RCE Water Resources Program recommends that all green infrastructure practices that are installed to disconnect impervious surfaces should be designed for the 2-year design storm (3.3 inches of rain over 24-hours). Although this results in management practices that are slightly over-designed by NJDEP standards, which require systems to be designed for the New Jersey water quality storm (1.25 inches of rain over 2-hours), these systems will be able to handle the increase in storm intensities that are expected to occur due to climate change. By designing these management practices for the 2-year design storm, these practices will be able to manage 95% of the annual rainfall volume. The recommended annual reductions in runoff volumes are shown in Table 3.

As previously mentioned, once impervious surfaces have been identified, the next steps for managing impervious surfaces are to 1) eliminate surfaces that are not necessary, 2) reduce or convert impervious surfaces to pervious surfaces, and 3) disconnect impervious surfaces from flowing directly to local waterways.

Elimination of Impervious Surfaces

One method to reduce impervious cover is to "depave." Depaving is the act of removing paved impervious surfaces and replacing them with pervious soil and vegetation that will allow for the infiltration of rainwater. Depaving leads to the re-creation of natural space that will help reduce flooding, increase wildlife habitat, and positively enhance water quality as well as beautify neighborhoods. Depaving also can bring communities together around a shared vision to work together to reconnect their neighborhood to the natural environment.

Table 3: Impervious cover reductions by subwatershed in Stow Creek Township

Subwatershed	Recommended Impervious Area Reduction (10%) (ac)	Annual Runoff Volume Reduction ² (MGal)
Barrett Run	2.1	2.4
Cohansey River	1.1	1.2
Pine Mount Creek	0.0	0.0
Stow Creek	14.7	16.7
Total	18.0	20.4

² Annual Runoff Volume Reduction =

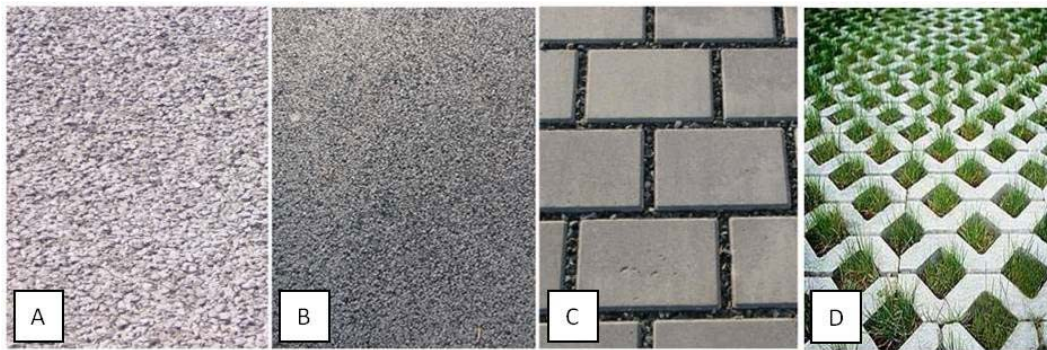
Acres of IC x 43,560 ft²/ac x 44 in x (1 ft/12 in) x 0.95 x (7.48 gal/ft³) x (1 MGal/1,000,000 gal)

All BMPs should be designed to capture the first 3.3 inches of rain from each storm. This would allow the BMP to capture 95% of the annual rainfall of 44 inches.

Pervious Pavement

There are four different types of permeable pavement systems that are commonly being used throughout the country to reduce the environmental impacts from impervious surfaces. These surfaces include pervious concrete, porous asphalt, interlocking concrete pavers, and grid pavers.

“Permeable pavement is a stormwater drainage system that allows rainwater and runoff to move through the pavement’s surface to a storage layer below, with the water eventually seeping into the underlying soil. Permeable pavement is beneficial to the environment because it can reduce stormwater volume, treat stormwater water quality, replenish the groundwater supply, and lower air temperatures on hot days (Rowe, 2012).”



Permeable surfaces: (A) pervious concrete, (B) porous asphalt, (C) interlocking concrete pavers, (D) grid pavers (Rowe, 2012)

Pervious concrete and porous asphalt are the most common of the permeable surfaces. They are similar to regular concrete and asphalt but without the fine materials. This allows water to quickly pass through the material into an underlying layered system of stone that holds the water, allowing it to infiltrate into the underlying uncompacted soil.

Impervious Cover Disconnection Practices

By redirecting runoff from paving and rooftops to pervious areas in the landscape, the amount of directly connected impervious area in a drainage area can be greatly reduced. There are many cost-effective ways to disconnect impervious surfaces from local waterways.

- **Simple Disconnection**: This is the easiest and least costly method to reduce stormwater runoff for smaller storm events. Instead of piping rooftop runoff to the street where it enters the catch basin and is piped to the river, the rooftop runoff is released onto a grassed

area to allow the water to be filtered by the grass and soak into the ground. A healthy lawn typically can absorb the first one to two inches of stormwater runoff from a rooftop. Simple disconnection also can be used to manage stormwater runoff from paved areas. Designing a parking lot or driveway to drain onto a grassed area, instead of the street, can dramatically reduce pollution and runoff volumes.

- Rain Gardens: Stormwater can be diverted into shallow landscaped depressed areas (i.e., rain gardens) where the vegetation filters the water, and it is allowed to soak into the ground. Rain gardens, also known as bioretention systems, come in all shapes and sizes and can be designed to disconnect a variety of impervious surfaces (Figure 7).



Figure 7: Rain garden outside the RCE of Gloucester County office which was designed to disconnect rooftop runoff from the local storm sewer system

- Rainwater Harvesting: Rainwater harvesting includes the use of rain barrels and cisterns (Figures 8a and 8b). These can be placed below downspouts to collect rooftop runoff. The collected water has a variety of uses including watering plants and washing cars. This practice also helps cut down on the use of potable water for nondrinking purposes. It is important to divert the overflow from the rainwater harvesting system to a pervious area.



Figure 8a: Rain barrel used to disconnect a downspout with the overflow going to a flower bed



Figure 8b: A 5,000 gallon cistern used to disconnect the rooftop of the Department of Public Works in Clark Township to harvest rainwater for nonprofit car wash events

Examples of Opportunities in Stow Creek Township

To address the impact of stormwater runoff from impervious surfaces, the next step is to identify opportunities in the municipality for eliminating, reducing, or disconnecting directly connected impervious surfaces. To accomplish this task, an impervious cover reduction action plan should be prepared. Aerial photographs are used to identify sites with impervious surfaces in the municipality that may be suitable for inclusion in the action plan. After sites are identified, site visits are conducted to photo-document all opportunities and evaluate the feasibility of eliminating, reducing, or disconnecting directly connected impervious surfaces. A brief description of each site discussing the existing conditions and recommendations for treatment of the impervious surfaces is developed. After a number of sites have been selected for inclusion in the action plan, concept plans and detailed green infrastructure information sheets are prepared for a selection of representative sites.

For Stow Creek Township, three sites have been included in this assessment. Examples of concept plans and detailed green infrastructure information sheets are provided in Appendix A. The detailed green infrastructure information sheets describe existing conditions and issues, proposed solutions, anticipated benefits, possible funding sources, potential partners and stakeholders, and estimated costs. Additionally, each project has been classified as a mitigation opportunity for recharge potential, total suspended solids removal, and stormwater peak reduction. Finally, these detailed green infrastructure information sheets provide an estimate of gallons of stormwater captured and treated per year by each proposed green infrastructure practice. The concept plans provide an aerial photograph of the site and details of the proposed green infrastructure practices.

Conclusions

Stow Creek Township can reduce flooding and improve its waterways by better managing stormwater runoff from impervious surfaces. This impervious cover assessment is the first step toward better managing stormwater runoff. The next step is to develop an action plan to eliminate, reduce, or disconnect impervious surfaces where possible and practical. Many of the highly effective disconnection practices are inexpensive. The entire community can be engaged in implementing these disconnection practices.

References

Arnold, Jr., C.L. and C.J. Gibbons. 1996. Impervious Surface Coverage The Emergence of a Key Environmental Indicator. *Journal of the American Planning Association* 62(2): 243-258.

Caraco, D., R. Claytor, P. Hinkle, H. Kwon, T. Schueler, C. Swann, S. Vysotsky, and J. Zielinski. 1998. Rapid Watershed Planning Handbook. A Comprehensive Guide for Managing Urbanizing Watersheds. Prepared by Center For Watershed Protection, Ellicott City, MD. Prepared for U.S. Environmental Protection Agency, Office of Wetlands, Oceans and Watersheds and Region V. October 1998.

May, C.W., R.R. Horner, J.R. Karr, B.W. Mar, and E.G. Welch. 1997. Effects of Urbanization on Small Streams in the Puget Sound Lowland Ecoregion. *Watershed Protection Techniques* 2(4): 483-493.

Nowak, D.J. and E.J. Greenfield. 2012. Trees and Impervious Cover in the United States. *Landscape and Urban Planning* 107 (2012): 21-30.
http://www.nrs.fs.fed.us/pubs/jrnl/2012/nrs_2012_nowak_002.pdf

Rowe, A. 2012. Green Infrastructure Practices: An Introduction to Permeable Pavement. Rutgers NJAES Cooperative Extension, FS1177, pp. 4.
<http://njaes.rutgers.edu/pubs/publication.asp?pid=FS1177>

Schueler, T. 1994. The Importance of Imperviousness. *Watershed Protection Techniques* 1(3): 100-111.

Schueler, T.R. 2004. An integrated framework to restore small urban watersheds. Center for Watershed Protection, Ellicott City, MD.

Schuler, T.R., L. Fraley-McNeal, and K. Cappiella. 2009. Is Impervious Cover Still Important? Review of Recent Research. *Journal of Hydrologic Engineering* 14 (4): 309-315.

United States Environmental Protection Agency (USEPA). 2013. Watershed Assessment, Tracking, and Environmental Results, New Jersey Water Quality Assessment Report.
http://ofmpub.epa.gov/waters10/attains_state.control?p_state=NJ

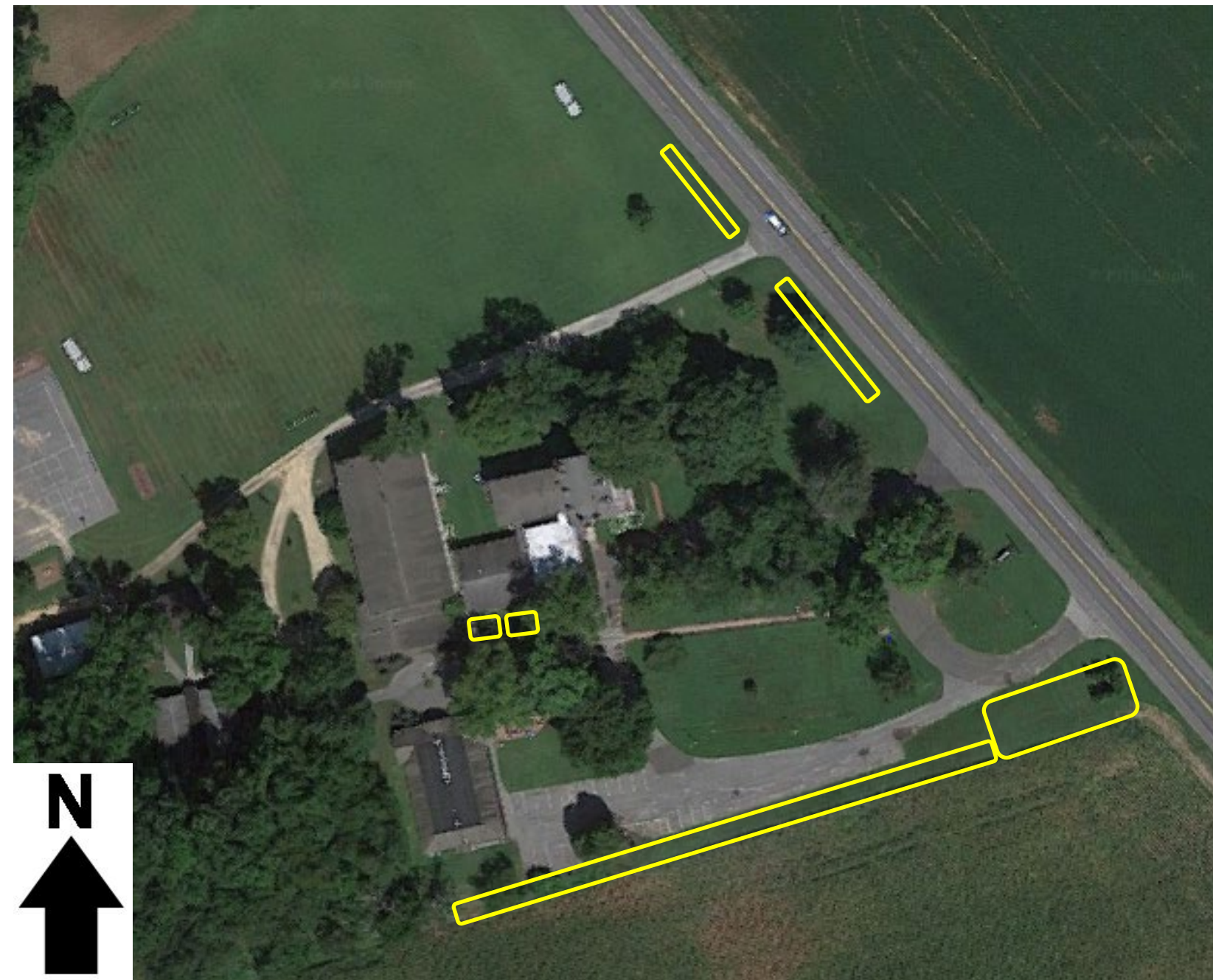
Appendix A

Concept Plans and Detailed Green Infrastructure Information Sheets

Stow Creek Township Impervious Cover Assessment

Woodland County Day School, 1216 Roadstown Road

PROJECT LOCATION:



A



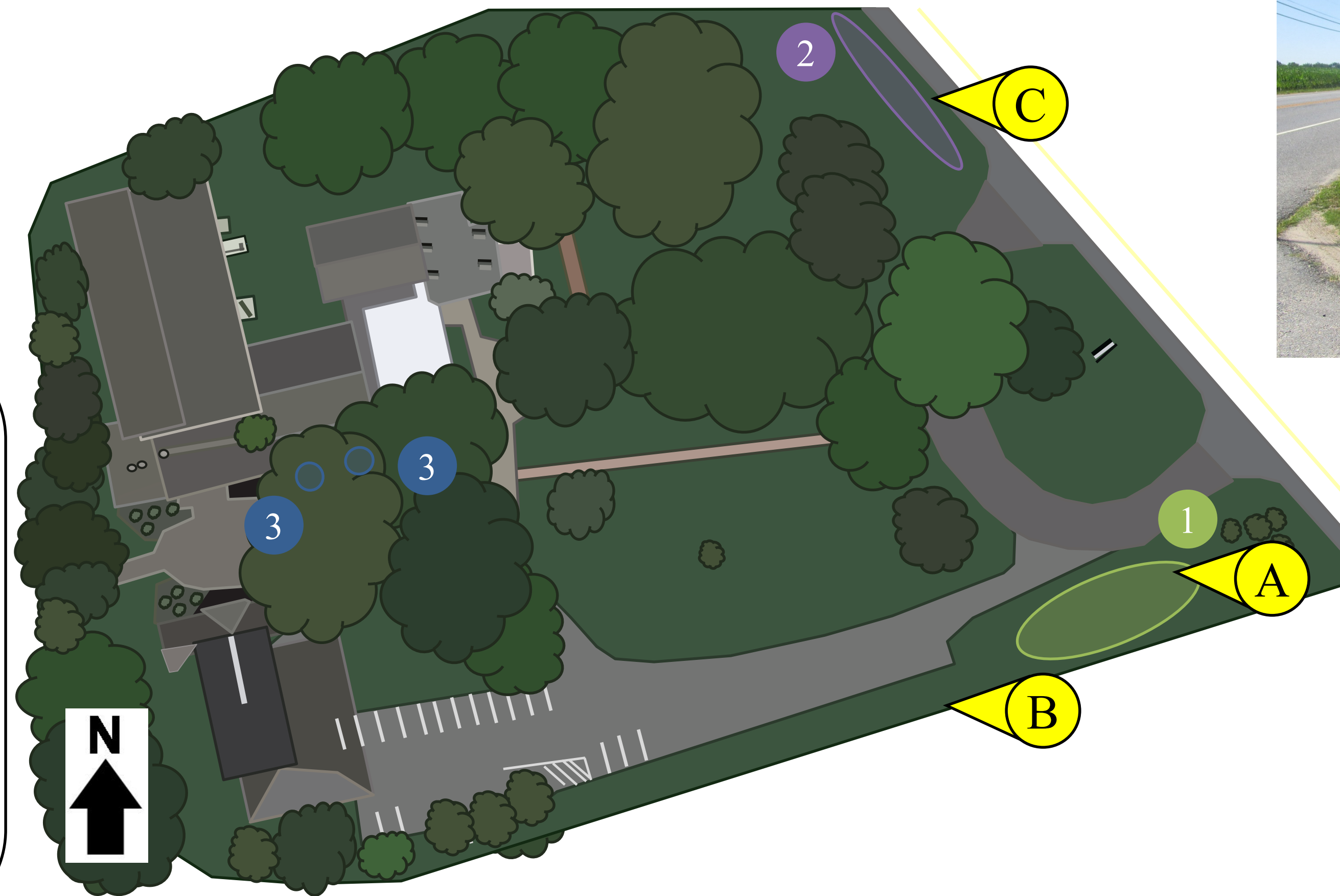
B



C



SITE PLAN:

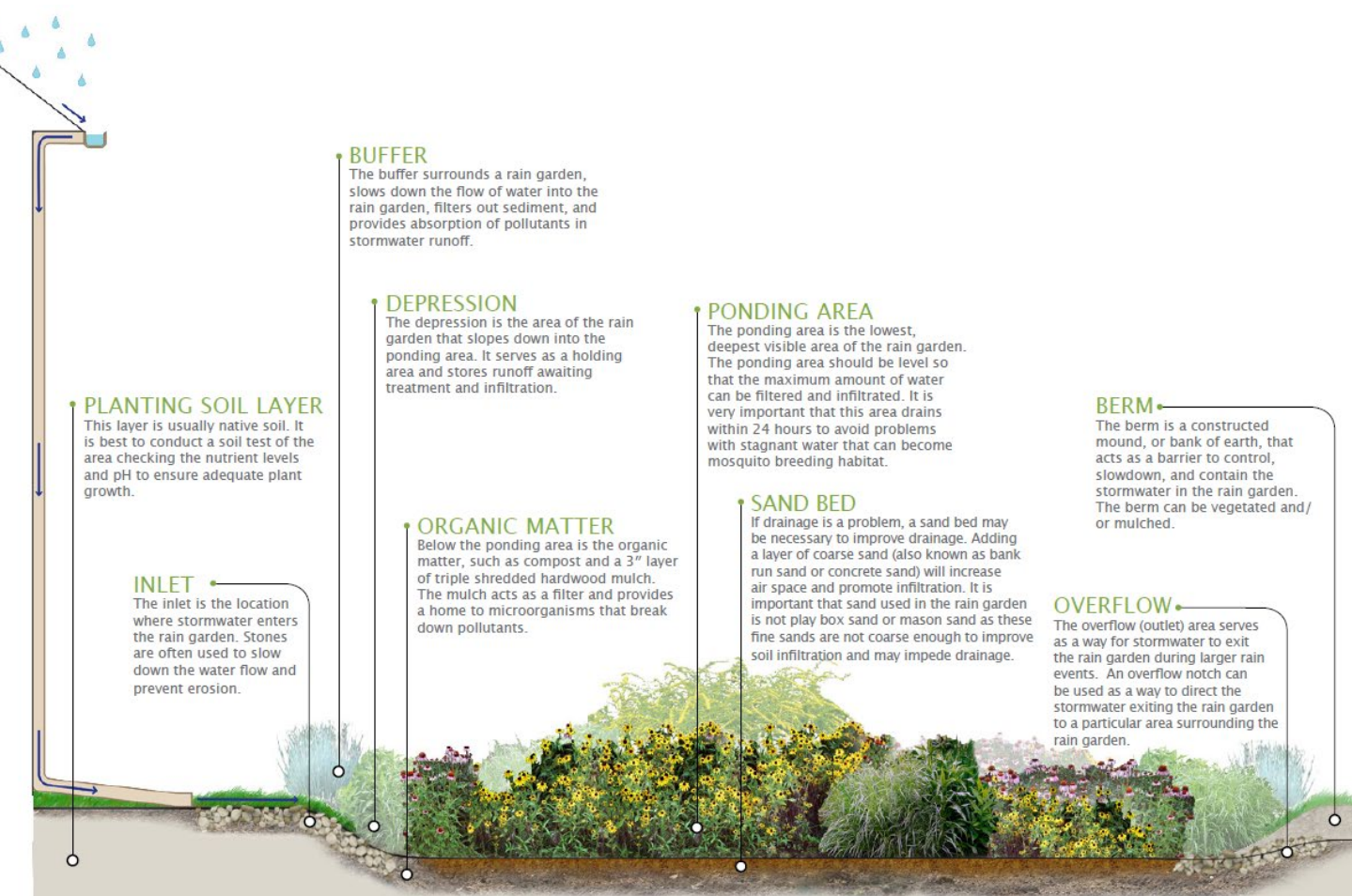


- 1 BIORETENTION SYSTEM:** A rain garden can be installed alongside the south driveway. Rain gardens are used to reduce sediment and nutrient loading to the local waterway and increase groundwater recharge.
- 2 BIOSWALE:** Bioswales are landscape features that convey stormwater from one location to another while removing pollutants and providing water an opportunity to infiltrate.
- 3 DOWNSPOUT PLANTER:** Downspout planters can be installed on the south side of the central building. These are wooden boxes with plants installed at the base of a downspout that provide an opportunity to beneficially reuse rooftop runoff.

EDUCATIONAL PROGRAM: The RCE Water Resources Program's *Stormwater Management in Your Schoolyard* Program can be delivered at Woodland County School to educate the students about stormwater management and engage them in designing and building the bioretention systems.

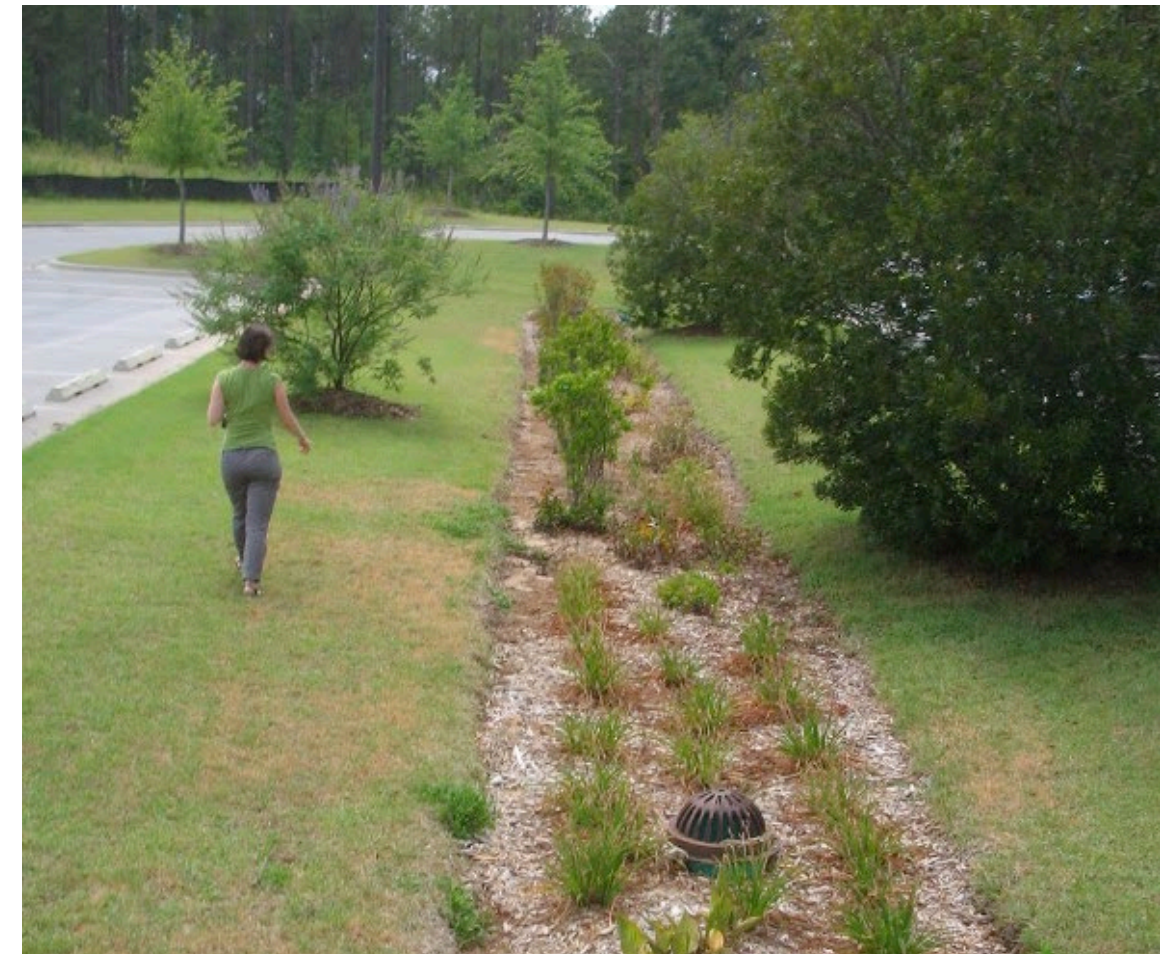
1

BIORETENTION SYSTEM



2

BIOSWALE



3

DOWNSPOUT PLANTER



EDUCATIONAL PROGRAM



Woodland County Day School
Green Infrastructure Information Sheet

<p>Location: 1216 Roadstown Road Bridgeton, NJ 08302</p>	<p>Municipality: Stow Creek Township</p>
<p>Green Infrastructure Description: bioretention system (rain garden) bioswale downspout planter</p>	<p>Subwatershed: Stow Creek</p> <p>Targeted Pollutants: total nitrogen (TN), total phosphorus (TP), and total suspended solids (TSS) in surface runoff</p>
<p>Mitigation Opportunities: recharge potential: yes stormwater peak reduction potential: yes total suspended solids removal potential: yes</p>	<p>Stormwater Captured and Treated Per Year: bioretention system: 130,280 gal. bioswale: 112,560 gal. six downspout planters: 13,580 gal.</p>
<p>Existing Conditions and Issues: There are multiple buildings with directly connected downspouts. The parking lot appears to drain to a turfgrass area with signs of erosion. Along the roadway to the school driveway the road is pitched draining runoff into a depressed turfgrass area.</p>	
<p>Proposed Solution(s): A bioswale can be placed in the turfgrass area adjacent to Roadstown Road. The rain garden can be placed to manage stormwater runoff from the parking lot. To capture rooftop runoff, downspout planters can be placed at the base of the downspouts on the center building.</p>	
<p>Anticipated Benefits: Since the bioretention systems would be designed to capture, treat, and infiltrate the entire 2-year design storm (3.3 inches of rain over 24 hours), these systems are estimated to reduce TN by 30%, TP by 60%, and TSS by 90%. A bioretention system would also provide ancillary benefits, such as enhanced wildlife and aesthetic appeal, to the local residents and students of Woodland Country Day School.</p> <p>Rutgers Cooperative Extension could additionally present the <i>Stormwater Management in Your Schoolyard</i> program to students and include them in bioretention system planting efforts to enhance the program.</p> <p>The bioswale will capture, treat, and infiltrate stormwater and reduce TN by 30%, TP by 60%, and TSS by 90%.</p> <p>Downspout planters will take in runoff from downspouts and achieve similar reductions in TN, TP, and TSS as the bioretention systems.</p>	

Woodland County Day School
Green Infrastructure Information Sheet

Possible Funding Sources:

mitigation funds from local developers
NJDEP grant programs
Stow Creek Township
local social and community groups

Partners/Stakeholders:

Stow Creek Township
Woodland County Day School
local community groups
students and parents
Rutgers Cooperative Extension

Estimated Cost:

A rain garden to capture the parking lot runoff would need to be approximately 1,250 square feet. At \$5 per square foot, the estimated cost of the rain garden is \$6,250.

The bioswale would need to be 135 feet long and 8 feet wide (1,080 sq. ft.). At \$5 per square foot, the estimated cost of the bioswale is \$5,400.

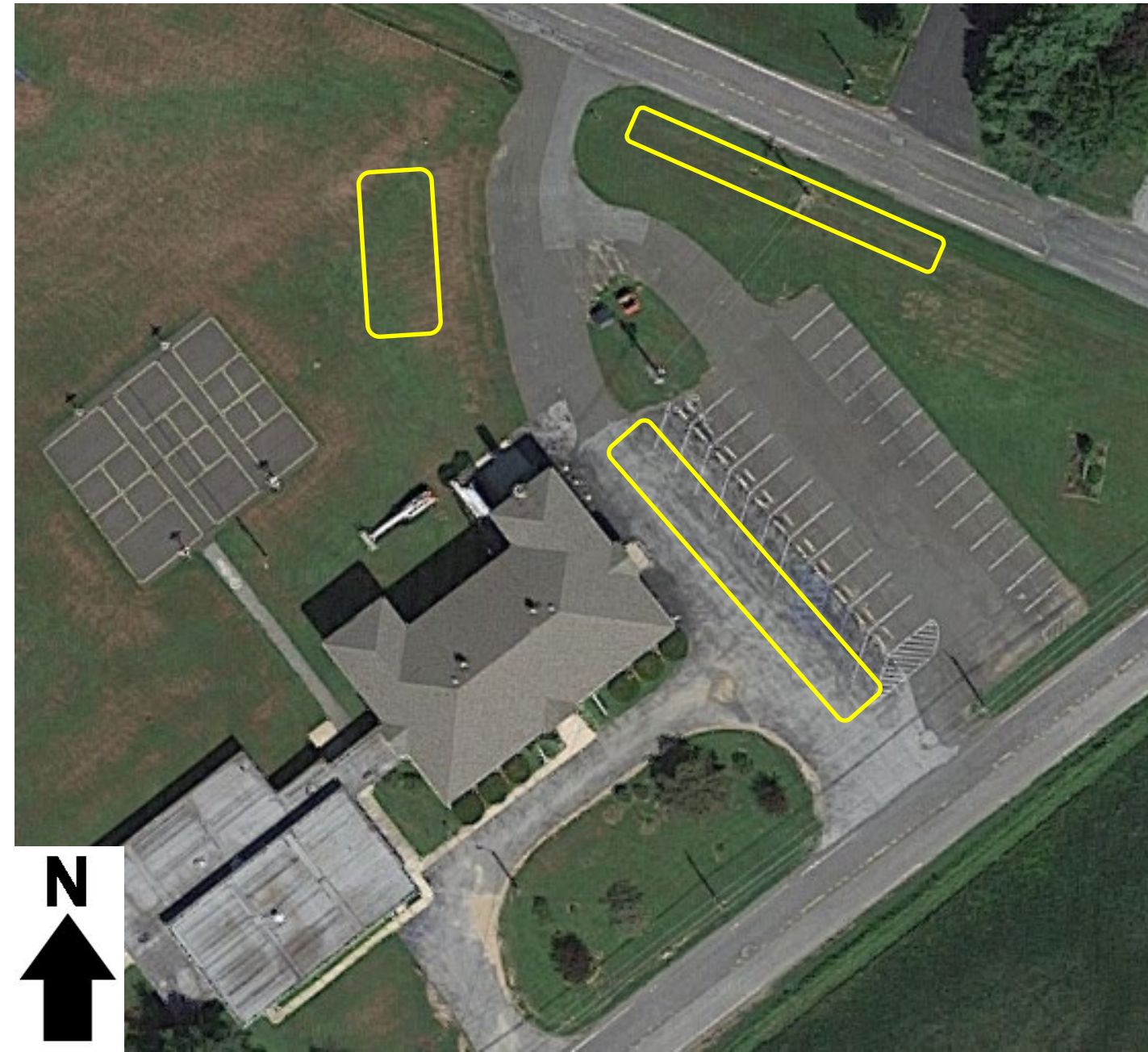
The estimated cost of each planter box is \$1,000 for a total cost of \$6,000.

The total cost of the project will be approximately \$17,650.

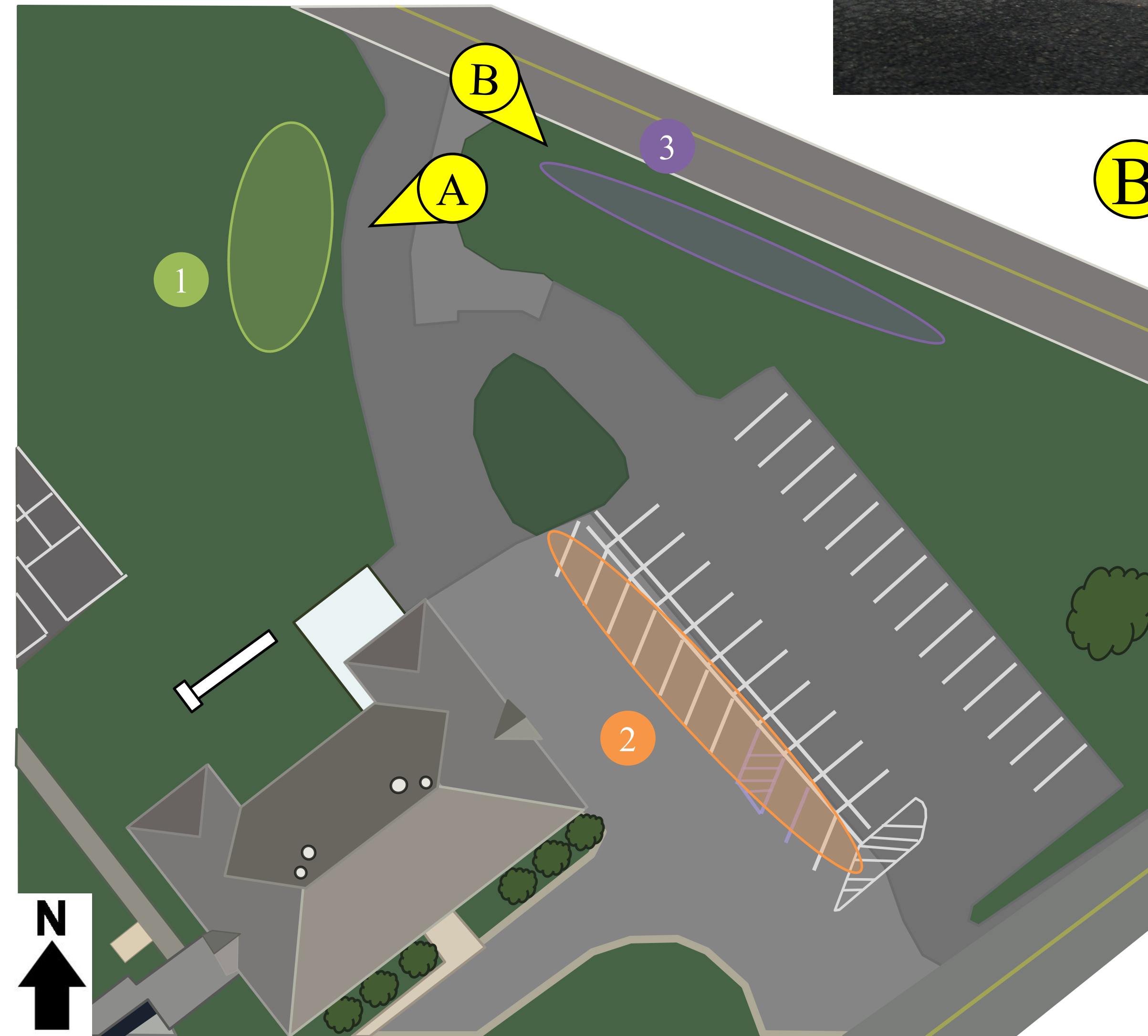
Stow Creek Township Impervious Cover Assessment

Stow Creek Township School, 11 Gum Tree Corner Road

PROJECT LOCATION:



SITE PLAN:



A



B



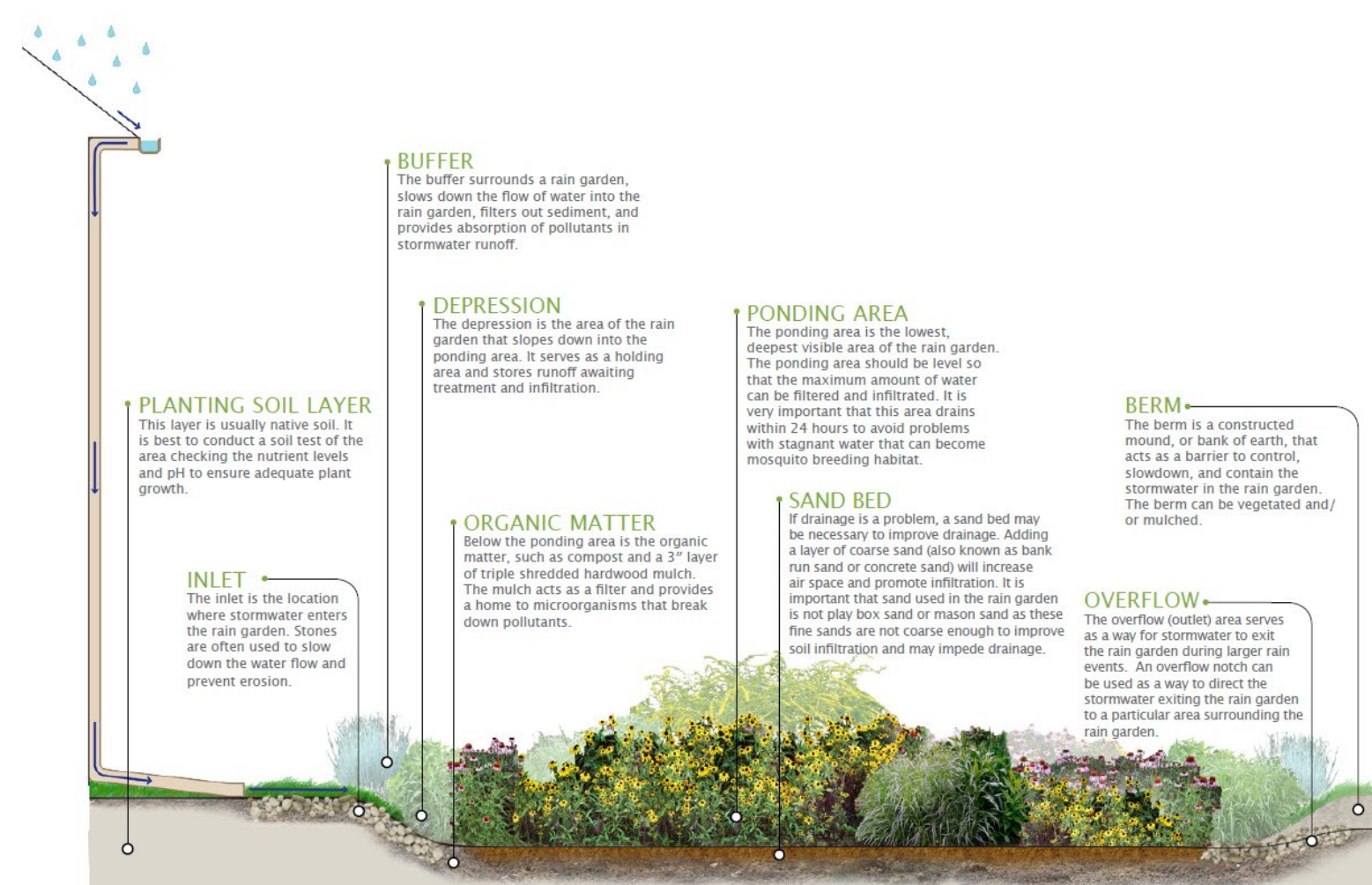
1 BIORETENTION SYSTEM: A rain garden can be installed alongside the north driveway. Rain gardens can be used to reduce sediment and nutrient loading to the local waterway and increase groundwater recharge.

2 PERVIOUS PAVEMENT: Pervious pavement can be used to replace the westernmost row of parking spaces. Pervious pavement promotes groundwater recharge and filters stormwater.

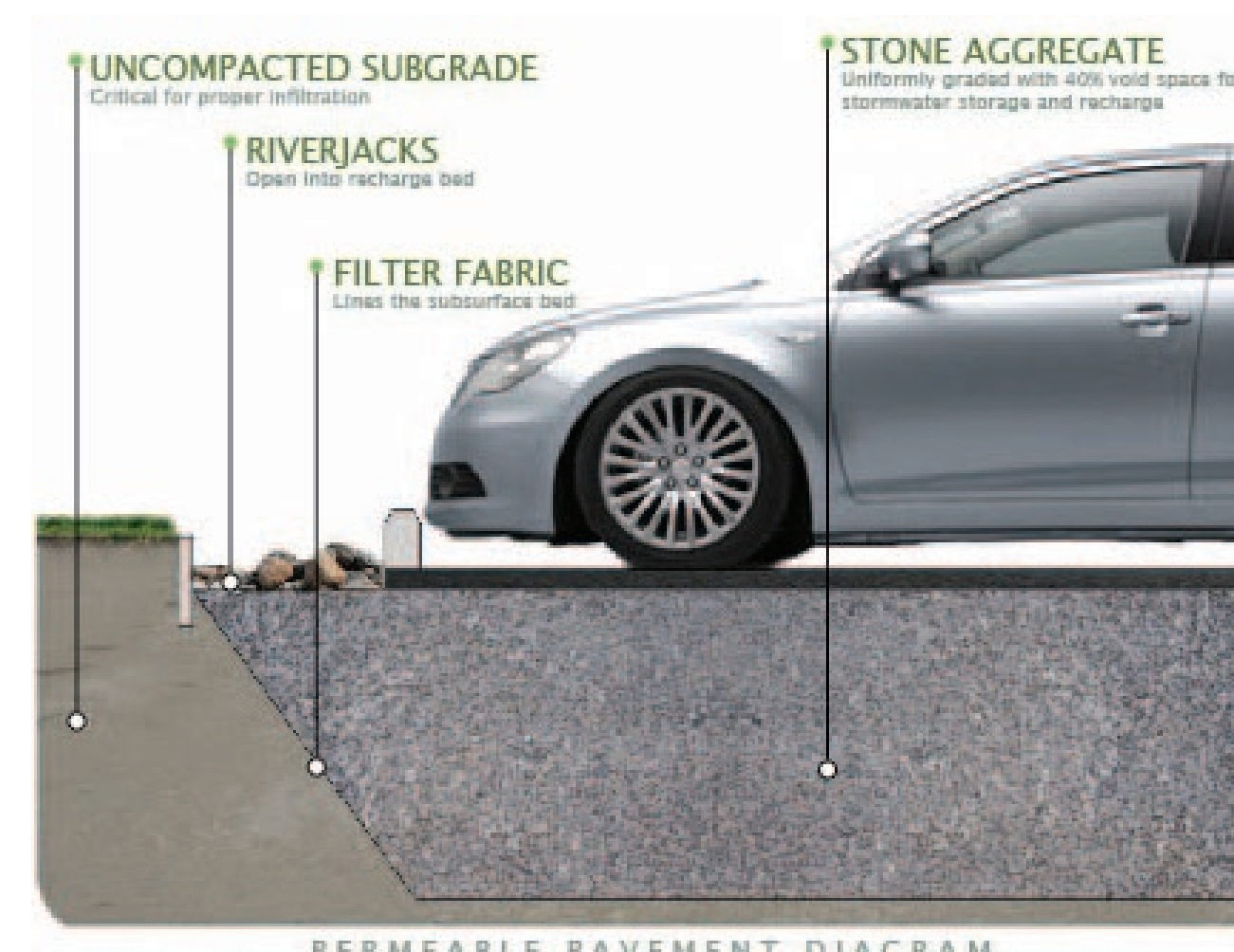
3 BIOSWALE: Bioswales are landscape features that convey stormwater from one location to another while removing pollutants and providing water an opportunity to infiltrate.

EDUCATIONAL PROGRAM: The RCE Water Resources Program's *Stormwater Management in Your Schoolyard* Program can be delivered at Stow Creek Township School to educate the students about stormwater management and engage them in designing and building the bioretention systems.

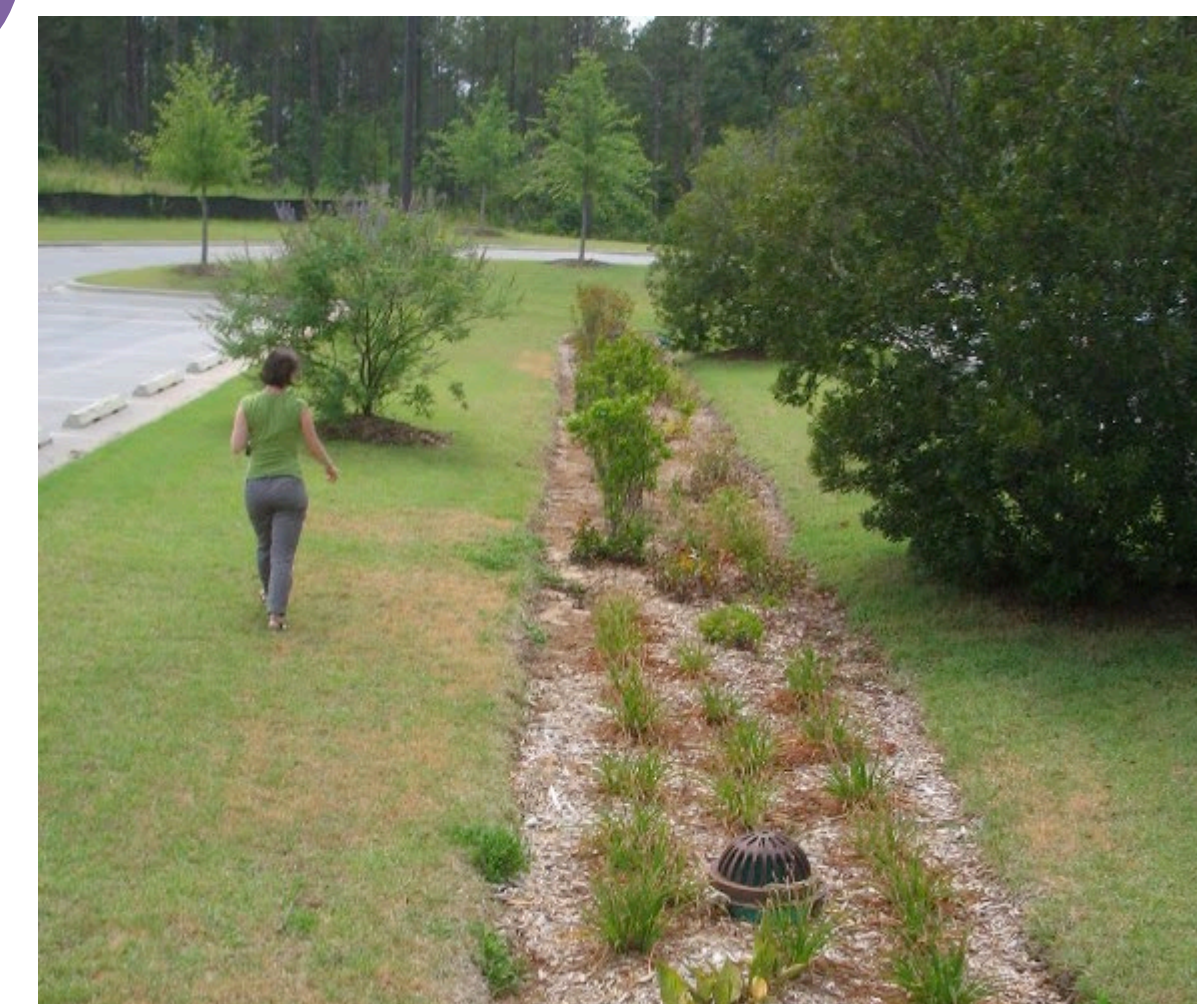
1 BIORETENTION SYSTEM



2 PERVIOUS PAVEMENT



3 BIOSWALE



EDUCATIONAL PROGRAM



Stow Creek Township School
Green Infrastructure Information Sheet

<p>Location: 11 Gum Tree Corner Road Bridgeton, NJ 08302</p>	<p>Municipality: Stow Creek Township</p>
<p>Green Infrastructure Description: bioretention system (rain garden) porous pavement bioswale</p>	<p>Subwatershed: Stow Creek</p> <p>Targeted Pollutants: total nitrogen (TN), total phosphorus (TP), and total suspended solids (TSS) in surface runoff</p>
<p>Mitigation Opportunities: recharge potential: yes stormwater peak reduction potential: yes total suspended solids removal potential: yes</p>	<p>Stormwater Captured and Treated Per Year: bioretention system: 182,390 gal. pervious pavement: 284,000 gal. bioswale: 76,990 gal.</p>
<p>Existing Conditions and Issues: This site shows signs flooding, and there is evidence of erosion for both the asphalt and the turfgrass along the west side of the north driveway. In addition, the row of parking spaces directly east of the building are severely cracked and eroded.</p>	
<p>Proposed Solution(s): A rain garden can be placed on the west side of the north driveway to capture and treat stormwater coming from the parking lot as well as the driveway. In addition, the row of parking spaces directly east of the building can be replaced with pervious pavement to capture and infiltrate stormwater. A bioswale can be placed east of the entrance to the parking lot alongside Stow Creek Road to capture stormwater runoff from the road.</p>	
<p>Anticipated Benefits: Since the bioretention system would be designed to capture, treat, and infiltrate the entire 2-year design storm (3.3 inches of rain over 24 hours), this system is estimated to reduce TN by 30%, TP by 60%, and TSS by 90%. A bioretention system would also provide ancillary benefits, such as enhanced wildlife and aesthetic appeal, to the local residents and students of Stow Creek Township School.</p> <p>Rutgers Cooperative Extension could additionally present the <i>Stormwater Management in Your Schoolyard</i> program to students and include them in bioretention system planting efforts to enhance the program. This may also be used as a demonstration project for Stow Creek’s Public Works staff to launch educational programming.</p> <p>Pervious pavement allows stormwater to infiltrate through to soil layers which will promote groundwater recharge as well as intercept and filter stormwater runoff. The pervious pavement system will achieve the same level of pollutant load reduction for TN, TP, and TSS as the bioretention system.</p> <p>The bioswale will capture, treat, and infiltrate stormwater reducing TN by 30%, TP by 60%, and TSS by 90%.</p>	

Stow Creek Township School
Green Infrastructure Information Sheet

Possible Funding Sources:

mitigation funds from local developers
NJDEP grant programs
Stow Creek Township
parent teacher association
local social and community groups

Partners/Stakeholders:

Stow Creek Township
Stow Creek Township School
local community groups
students and parents
Rutgers Cooperative Extension

Estimated Cost:

A rain garden to capture the driveway and parking lot runoff would need to be approximately 1,750 square feet. At \$5 per square foot, the estimated cost of the rain garden is \$8,750.

The porous asphalt would cover 1,950 square feet and have a two-foot stone reservoir under the surface. At \$25 per square foot, the cost of the porous asphalt system would be \$48,750.

The bioswale would need to be 142 feet long and 5 feet wide (710 sq. ft.). At \$5 per square foot, the estimated cost of the bioswale is \$3,550.

The total cost of the project will be approximately \$61,050.

Stow Creek Township
 Impervious Cover Assessment

Enrico's Italian Cucina and Deli, 1145 Shiloh Pike

PROJECT LOCATION:



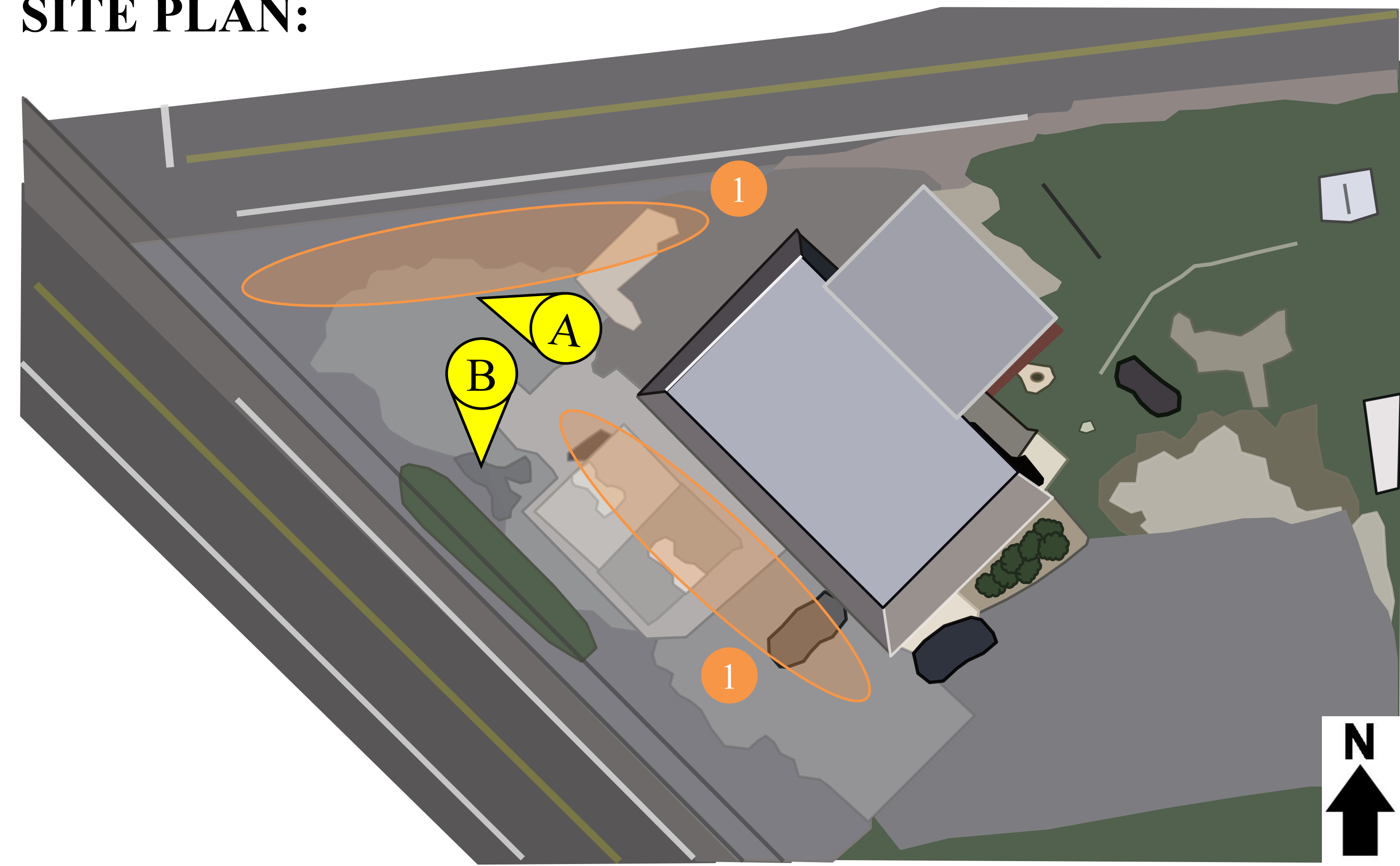
A



B

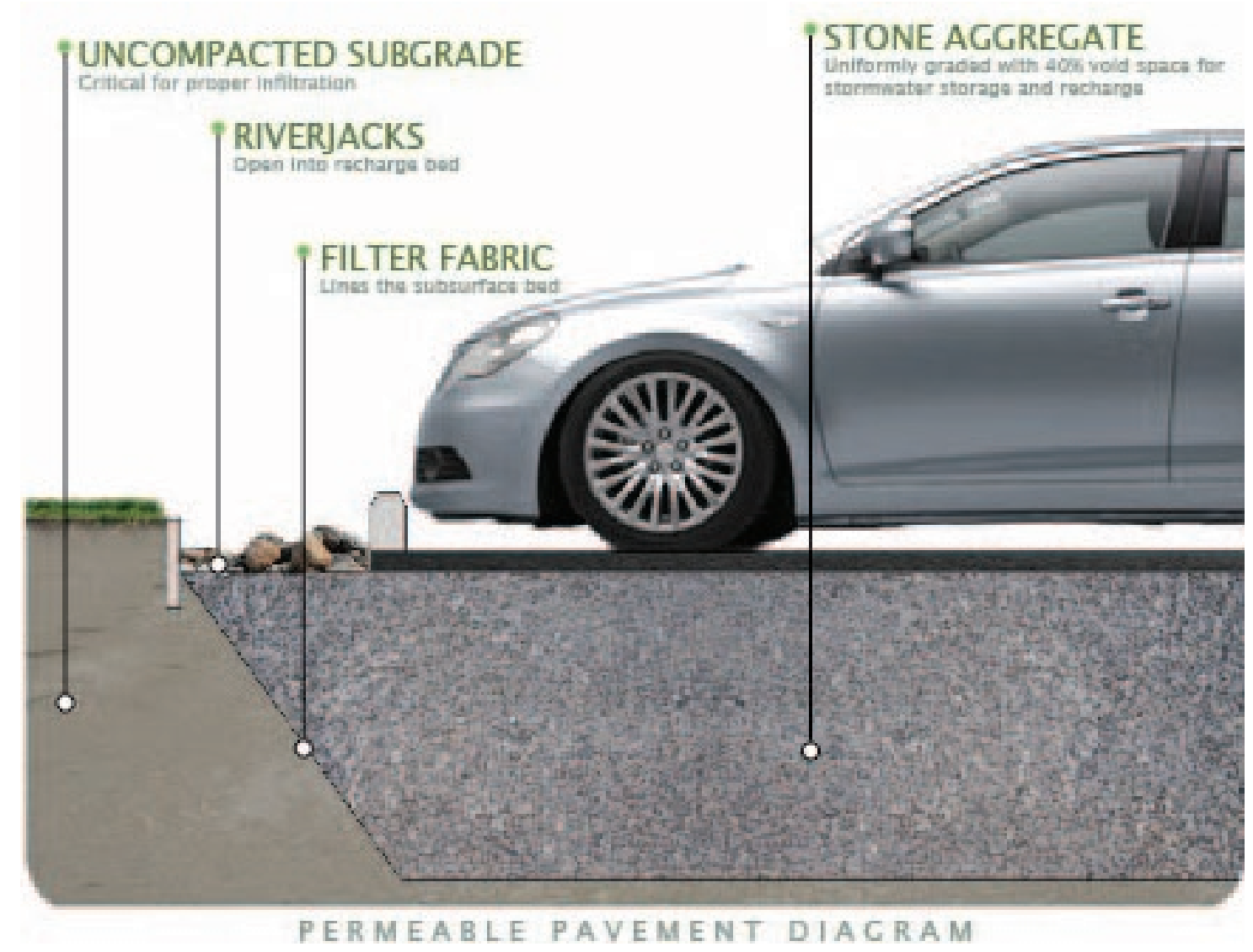


SITE PLAN:



1 PERVIOUS PAVEMENT: Pervious pavement can be placed in the row of parking spaces along the southwest side of the building as well as the row of spaces adjacent to the street north of the building. Pervious pavement promotes groundwater recharge and filters stormwater.

1 PERVIOUS PAVEMENT



Enrico's Italian Cucina and Deli
Green Infrastructure Information Sheet

<p>Location: 1145 Shiloh Pike Bridgeton, NJ 08302</p>	<p>Municipality: Stow Creek Township</p>
<p>Green Infrastructure Description: pervious pavement</p>	<p>Subwatershed: Stow Creek</p> <p>Targeted Pollutants: total nitrogen (TN), total phosphorus (TP), and total suspended solids (TSS) in surface runoff</p>
<p>Mitigation Opportunities: recharge potential: yes stormwater peak reduction potential: yes total suspended solids removal potential: yes</p>	<p>Stormwater Captured and Treated Per Year: pervious pavement: 140,050 gal.</p>
<p>Existing Conditions and Issues: This site has extreme visible erosion, cracking, and flooding in the parking lot. The parking lot covers most of the site's surface area.</p>	
<p>Proposed Solution(s): Rows of parking spaces can be replaced with pervious pavement to reduce erosion and flooding by capturing stormwater. The first row would be the one adjacent to the road north of the building, and the second would be the row along the southwest side of the building.</p>	
<p>Anticipated Benefits: Pervious pavement allows stormwater to infiltrate through to soil layers which will promote groundwater recharge as well as intercept and filter stormwater runoff. The pervious pavement system will reduce TN by 30%, TP by 60%, and TSS by 90%.</p>	
<p>Possible Funding Sources: mitigation funds from local developers NJDEP grant programs Stow Creek Township local social and community groups</p>	
<p>Partners/Stakeholders: Stow Creek Township Enrico's Italian Cucina and Deli local community groups residents Rutgers Cooperative Extension</p>	
<p>Estimated Cost: The porous asphalt would cover 960 square feet and have a two-foot stone reservoir under the surface. At \$25 per square foot, the cost of the porous asphalt system would be \$24,000. The total cost of the project will be approximately \$24,000.</p>	

